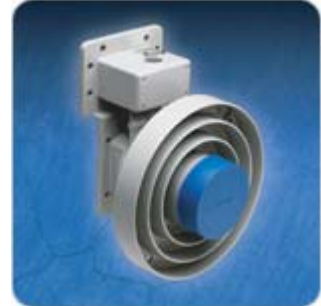




## CHAPARRAL FEED SUPER – CIRC

## CHAPARRAL FEED DUAL - CIRC

- Prime Focus Single and Dual Polarity Circular C Band Feeds
- Universal Mounting Pattern
- Made in the USA



SPECIFICATIONS	FEED-SUPER-CIRC	FEED-DUAL-CIRC
Polarity	Single	Dual
Frequency Range	3.7 – 4.2GHz	3.7 – 4.2GHz
f/D Range	.33 to .45	.33 to .45
Axial Ratio	3dB Typical	Port 1 $\leq$ 2.5dB / Port 2 $\leq$ 2dB
Return Loss	14dB	15dB
Insertion Loss	0.15dB	0.2dB
Isolation		< 20dB
Weight	1.43 lbs	2.23 lbs
Temperature Range	-40° C to + 60° C	-40° C to + 60°